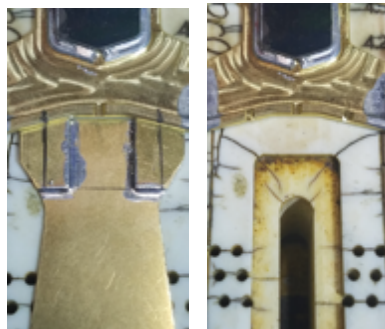


UKRRA center weight

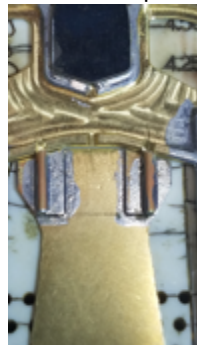
1. Use a pencil and place a line .25" from the outside edge of the center weight on both sides. Place a line .5" down from the front of the plate.



2. Solder a piece of .016" brass strip (.25" wide) to both area's you just marked off. It will be easier to use a larger piece (or full length) of brass to solder to the center weight then use a dremel and file to trim. Find the center on each of the .016 brass strips and mark with a pencil. Push the center weight against the nose and mark the nose where the notches will need to be cut. It's o.k. if the notch is a little larger than .062. Just be careful to not cut through the nose.



3. Solder .062 tubing onto the center weight and check to make sure they are spaced evenly from the outside edge. Check to make sure the notches you made in the nose line up. Adjust the notches if needed.



4. Cut two pieces of .062 tubing 7/16" (.4375") long. Take two straight body pins, apply oil to the pins, and insert into the tubing on the center weight. Next place the two pieces of tubing you just cut on the pins. The center weight should be placed 3/32" (.094") behind the nose. Check to make sure the center weight and tubing is sitting level. Solder the tubes to the nose.

